

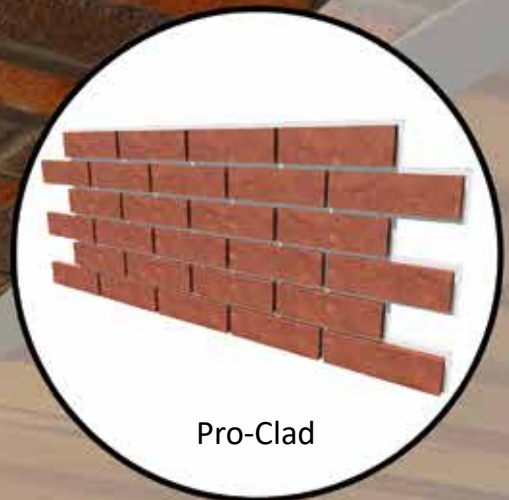


fab-lite
F A C A D E S L T D

Trusted Manufacturer
of High Quality Products



Pro-Steel Bolt Ups



Pro-Clad



Pro-Steel Lintels

THE MODERN WAY TO ACHIEVE A TRADITIONAL APPEARANCE

Fab-Lite Facades are manufacturers of innovative cost effective alternatives to masonry problems.

We specialise in tailor made solutions to suit needs of each project. Our experience and knowledge provides the right solution to overcome difficult brickwork features.

Our Pro-Clad & Pro-Steel pre-fabricated brick solutions give you the traditional brick finish but with innovative modern day techniques.

Why choose Fab-Lite Facades...



Quality Controlled Procedures



Easy & Fast to Install



Off-site Prefabricated Components



BBA Accredited



Cost Effective & Low Maintenance

**WE WORK HARD TO ENSURE OUR
INNOVATIVE PRODUCTS
EXCEED YOUR EXPECTATIONS
AND ARRIVE ON SITE WHEN REQUIRED**



Pro-Clad is resistant to water, rodents and mould in addition to its thermal and sound insulation properties. It is easy to work with and can be cut on site using a hand-held angle grinder fitted with a diamond tipped blade with appropriate PPE. It is chemically stable and Non Hazardous.

Pro-Clad as well as being BBA certified, has also been fully tested independently by Lucideon to etag 034 standards. All products are also manufactured to ISO 9001:2015 managed quality control standards.



Project using Pro-Clad 3 at Barnsley.

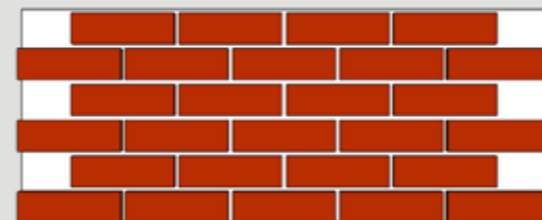
From receipt of construction drawings, Pro-Clad panel component set out are raised for each area.

Giving the appearance of continuous brickwork with no visible seem between panels. The fixings are hidden within the joints and the real brick finish is completed with the pointing material.

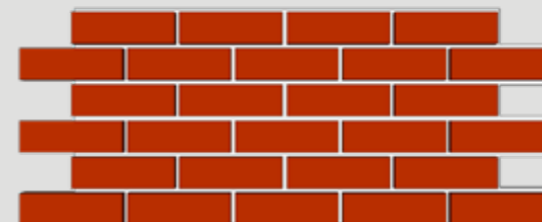
Pro-Clad

Pro-Clad™ can be used as a total or partial clad solution. On areas where brick slips need to be built adjacent to traditional brickwork, consistency of colour and finish can be maintained by ensuring bricks are collected from site, cut down in thickness before being fabricated onto the lightweight backing boards using a BBA approved resin manufactured to our BBA Certified processes.

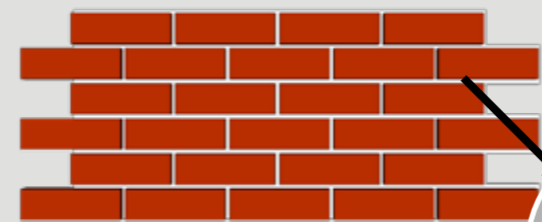
Pro-Clad™ backing boards have been developed to have a low environmental impact and are A1 Non-Combustible, suitable for internal or external use. The backing board incorporates a mesh layer to improve its strength and its ability to withstand impact without increasing the overall panel thickness.



PRO-CLAD 1: Our rectangular brick faced cladding system where the slips between the adjoining panels are fabricated on site once the panels have been installed, more suited to vertical wall areas where repetition in the panel size is required.



PRO-CLAD 2: Our interlocking cladding panel system where no on site fabrication of slips is required, suitable for vertical and soffit application the PC2 system is usually designed site specific to fit the areas required.



PRO-CLAD 3: Developed from our Pro-Clad 2 system but with the addition of a mechanical fix to each slip alongside the A2 fire resistant epoxy resin. Complete with our A1 non combustible backing board giving you total confidence.

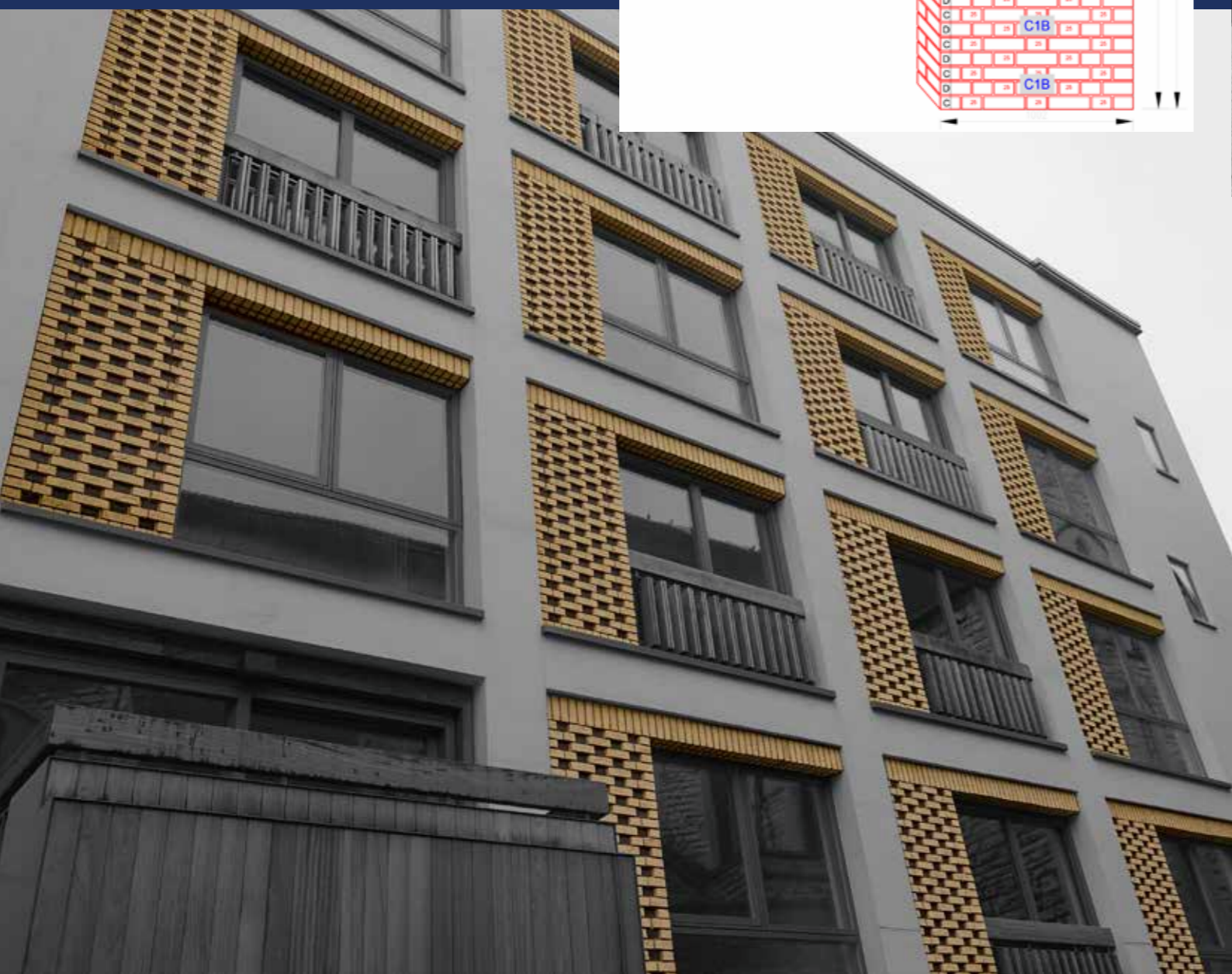
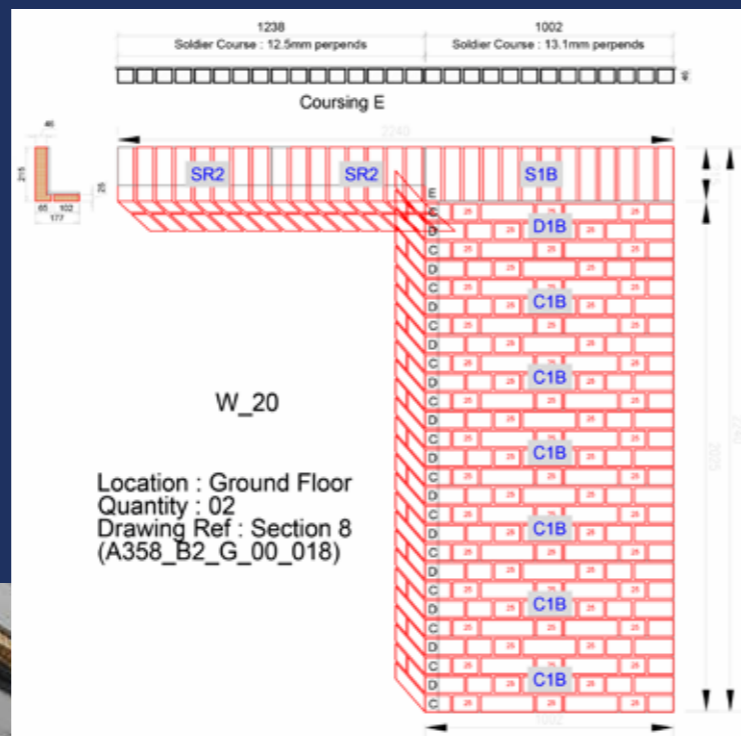


What we did?

We supplied both Pro-Clad brick panels for this project in Cheltenham. The architects on the John Dower House scheme required cladding and our panels are the perfect fit for intricate brick detailing.

The architect required a supplier to carry out brick cutting at varied depths to create a stepped brickwork appearance like in the photo shown, which eliminates the need for a specialist brickwork contractor spending hours on site, cutting bricks to suit complicated structural openings.

With all of our products manufactured off-site in factory controlled conditions we assisted with tight site foot print constraints and lack of site storage.



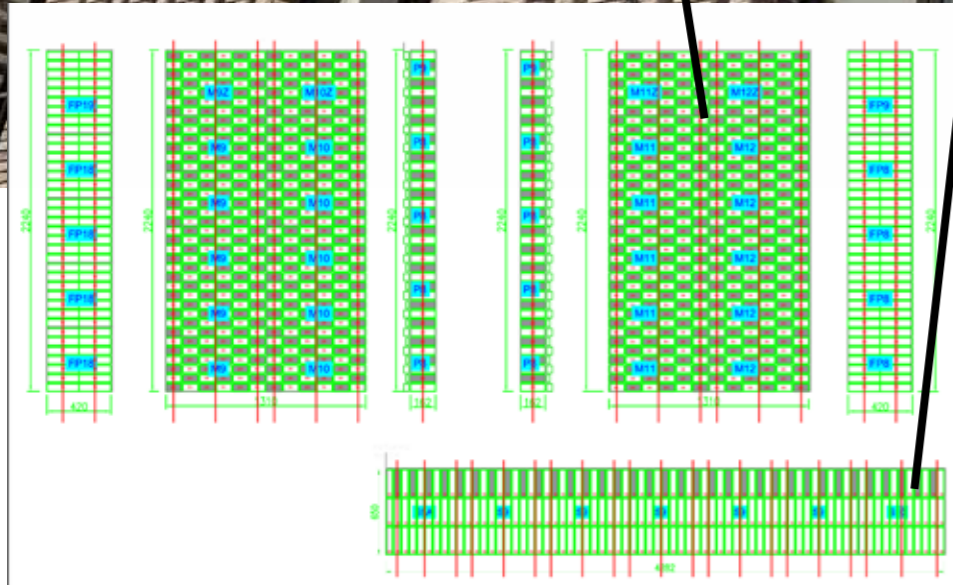
What we did?

Robert Browning Primary School in London was a total brickwork Cladding project.

Using Pro-Clad 2 panels supplied to clad the complicated timber frame construction. This was a fast track build but the client wanted to incorporate some traditional brickwork.

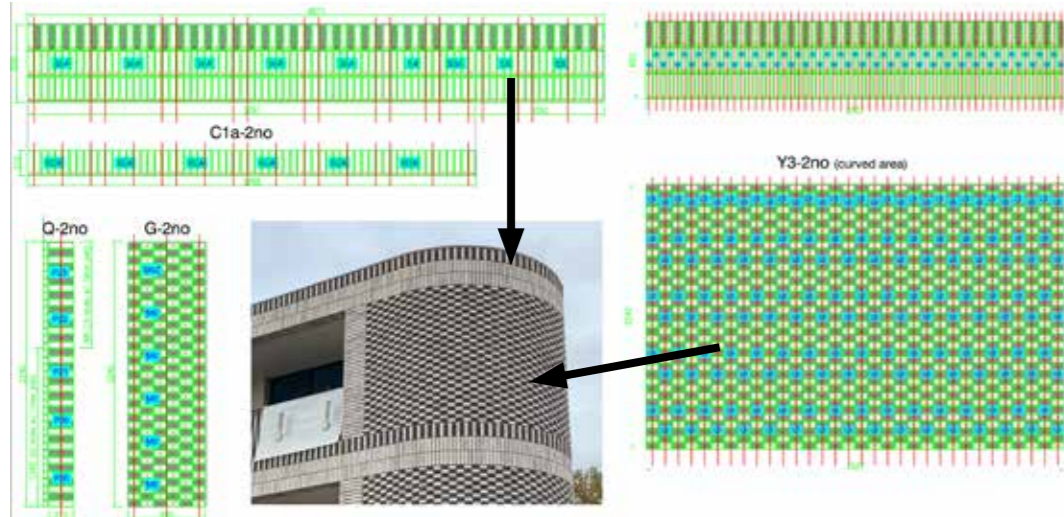
STANDARD PRO-CLAD PANEL DESIGNS

Bonding makes brickwork uniform in structure and composition, whilst maximising its strength durability and visual appearance. Below are six of our most popular bonding patterns produced in Pro-Clad panel boards.

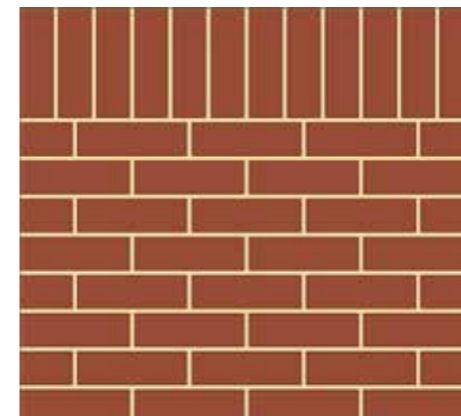


What we did?

This was a unique project manufactured in Pro-Clad 2 panels. We produced two different course heights to give a chequer board appearance on the building.

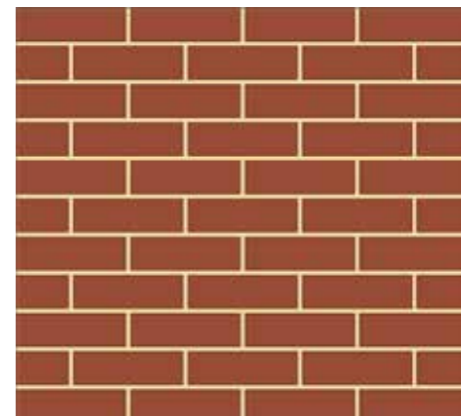


The main contractor needed to use our cladding panels to create a curved appearance around the front of the building while keeping a real brick finish for authentication.



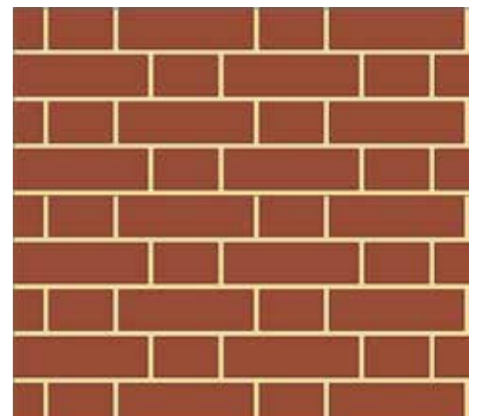
Typical Soldier Course with Stretcher Panel set out.

This is the same style as the stretcher bond but with a course of vertical bricks which can be situated at the top of our building or sat in between.



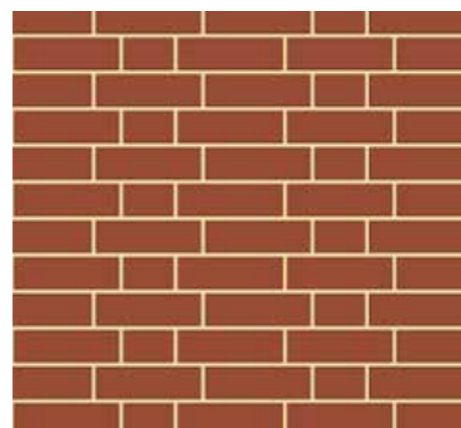
Typical Stretcher Bond Panel set out.

The Stretcher bond is composed of stretchers set in rows, offset by half a brick. It's the most common brick bond you will see on buildings.



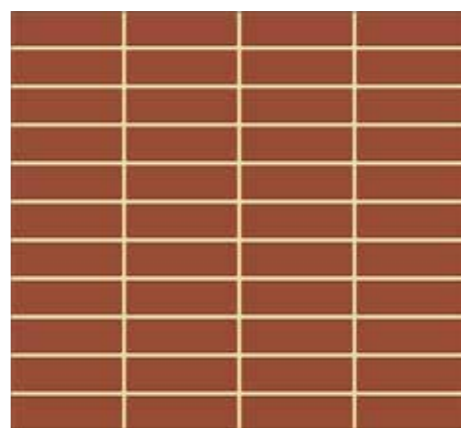
Typical Flemish Bond Panel set out.

The Flemish bond is created by alternately laying headers and stretchers. The next course is laid so that a header lies in the middle of the stretcher course.



Typical Garden Wall Panel set out.

This is a variant of Flemish bond using one header to three stretchers in each course. The header is centred over the stretcher in the middle of a group of three in the courses below.



Typical Horizontal Stack Panel set out.

In stack bond bricks are laid directly on top of one another with joints aligned, running vertically down the entire wall. Bricks can be stacked horizontally or vertically.



Typical Herringbourne Pattern Panel set out.

The Herringbourne is one of our most popular decorative brick patterns. The bricks are laid in alternating rows at 45 degree angles to each other, often found as a nice feature.

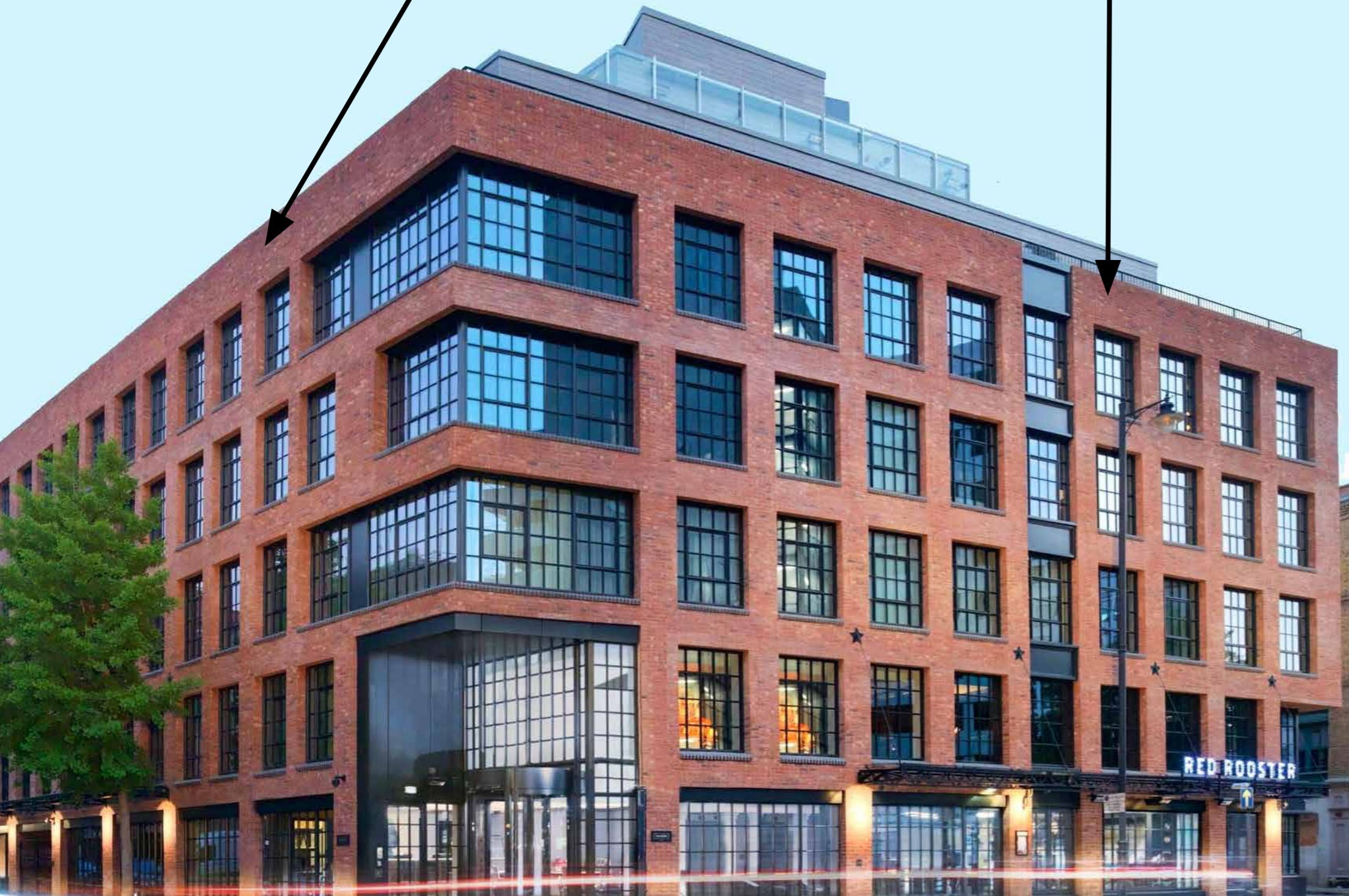


THE CURTAIN HOTEL IS DESIGNED FOR TODAY'S MODERN CONSTRUCTION

Possibly one of Fab-Lite Facades most iconic projects. The Curtain Hotel was a large project with approx. 1,800 square metres of Pro-Clad supplied including heads, reveals and bullnose cill panels to this new build hotel in the heart of Shoreditch, London.

The brick selected and the design by Dexter Moran Architects was focused on replicating the traditional masonry in the surrounding area.

As with all projects undertaken with Fab-Lite Facades we provide full CAD drawings showing the panel detailing on the building (as shown).





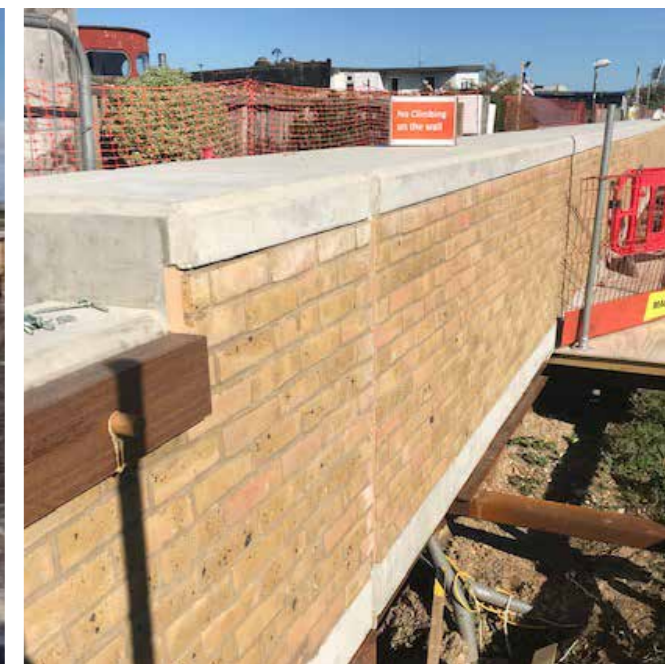
PRO-CLAD FLOOD DEFENCE SCHEMES

Pro Clad doesn't necessarily mean cladding your home or covering intricate parts of a building.

With all the certification that comes with our Pro-Clad panels we have the ideal product to use on flood defence schemes or large commercial buildings.

Our Pro-Clad panels will give an authentic real brick finish to a concrete flood defence structure.

Installers find it is easy to work with and can be cut on site using a hand-held angle grinder fitted with a diamond tipped blade with appropriate PPE.



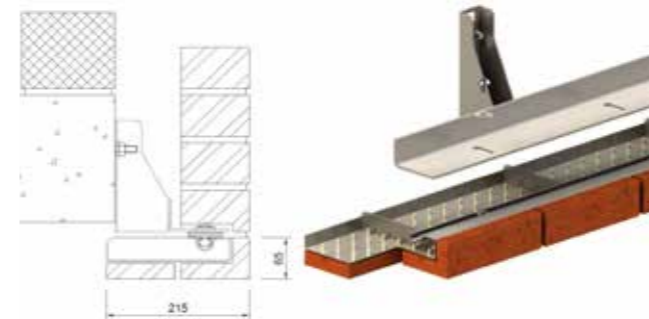
Pro-Steel Bolt Ups System

Pro-Steel soffit bolt ups are a lightweight non structural brick faced stainless steel component, they are supported from above by the masonry support with a simple bolt connection detail.

Bolt ups can be quickly and easily mechanically fixed to the slots provided in the masonry support system to create various hanging brick soffit details in a wide range of brickwork bond patterns.

Bolt Up Solutions

215 x 65mm Stretcher Pro-Steel Bolt Up



The system courses in with facing brickwork and provides continuity between the stretcher/running bond pattern as it returns to the soffit on the underside of the reveal return.

Adjacent soffit units are designed to interlock together providing seamless continuity of the brick bond once pointed. Depending on the availability of special brick types in the specified product, we can offer further advice on alternative designs and bonding arrangements.

102 x 65mm Header Pro-Steel Bolt Up



The double header pattern provides an option to standard stretcher bond with the bed pistol header returning the full width of the soffit with no requirement for any interlock.

Depending on the choice of facing brick, its bed face finish and the availability of faced on bed special bricks, we can offer further advice on alternative designs and bonding arrangements.

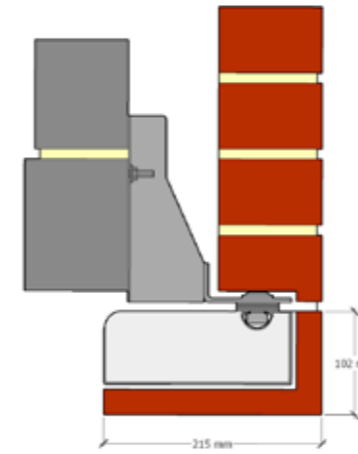
Fab-Lite Facades

Brick faced soffit bolt ups

Below are a few of our most popular design options of Fab-Lite Facades' soffit bolt up units. We are not limited to this range but merely examples of our popular designs.

All of our systems are bespoke and project specific, therefore options are pretty much limitless. Once Fab-Lite Facades are engaged, our dedicated design manager will tailor make your soffit solution to your exact requirements.

215 x 102.5mm Rowlock Soffit Bolt Up

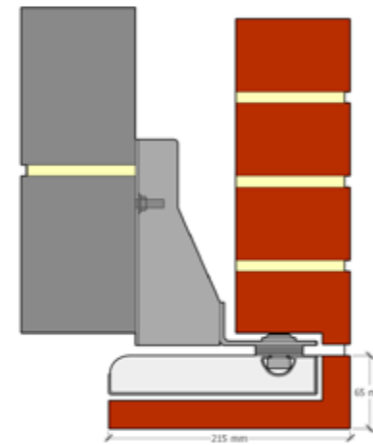


Provides a header/rowlock course detail at openings, returns and reveals to create a feature or detail to differentiate between the facing brickwork which is most commonly a stretcher/running bond pattern. Adjacent soffit units are designed to abut with a nominal 10mm joint providing a seamless face/soffit effect once pointed.

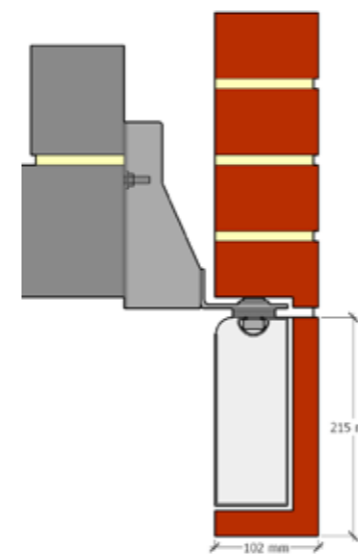


215 x 65mm Header Bond Soffit Bolt Up

Courses in with facing brickwork and provides continuity with the stretcher/running bond pattern as it returns to the soffit on the underside of the reveal or return. Adjacent soffit units are designed to interlock together, providing seamless continuity of the brick bond once pointed.



102.5 x 215mm Soldier Bond Soffit Bolt Up

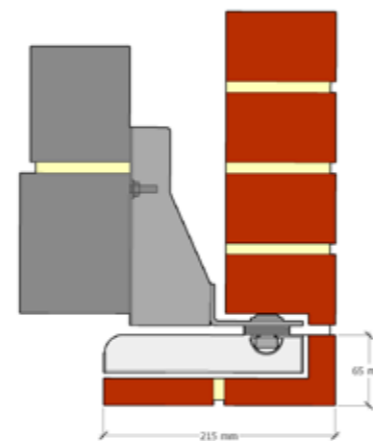


Provides a soldier course detail at openings, returns and reveals to create a feature or detail to differentiate between the facing brickwork which is most commonly a stretcher/running bond pattern. Adjacent soffit units are design to abut with a nominal 10mm joint providing a seamless face/soffit effect once pointed.



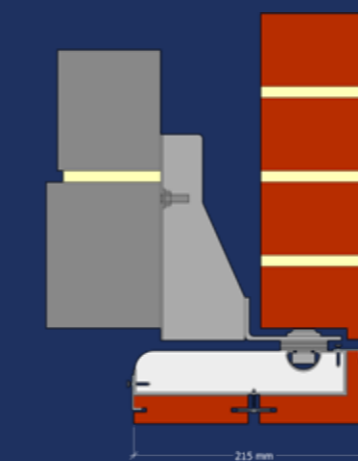
215 x 65mm Stretcher Bond Soffit Bolt Up

Provides a header detail at openings, returns and reveals to create a feature or detail to differentiate between the facing brickwork which is most commonly a stretcher/running bond pattern. Adjacent soffit units are designed to abut with a nominal 10mm joint providing a seamless face/soffit effect once pointed.

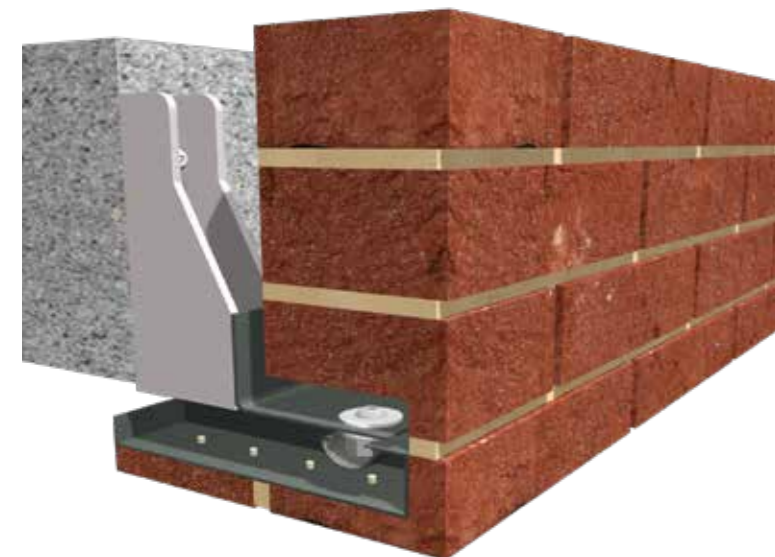
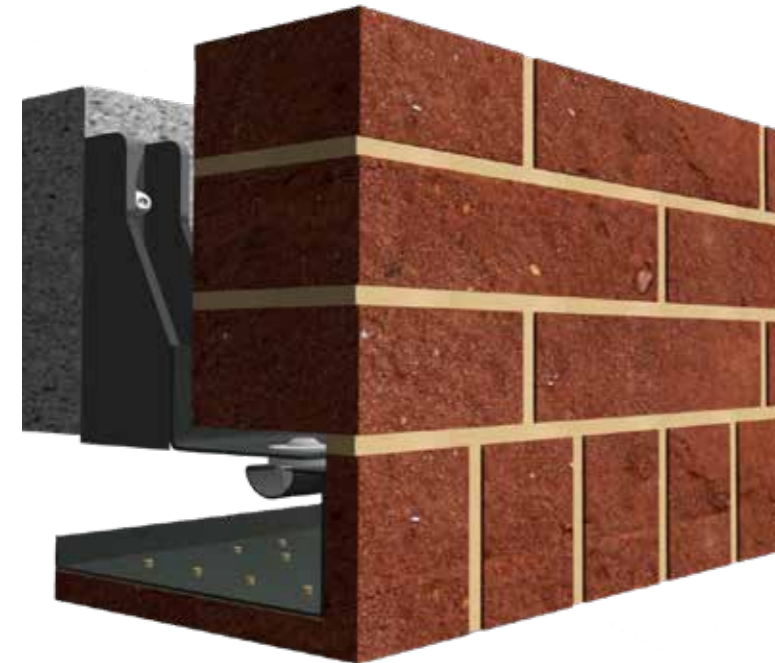
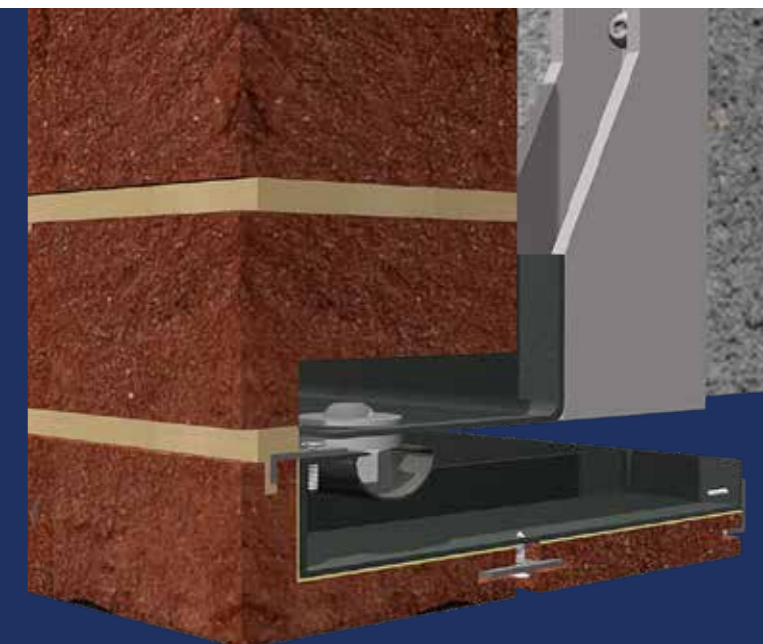


NEW FOR 2020

Bolt-Up Mechanical Fix



Every brick slip on this Bolt Up system is mechanically fixed and resin bonded for ultimate security. This Pro-Lock system uses A2 fire resistant Epoxy resin.





The Upper Richmond Road project was designed by AHMM Architects and London Square on this fantastic South Bank Showpiece development.

Originally our Pro-Steel bolt ups were intended to be used, however, once the architects noticed we could provide alternatives for cladding and lintels Fab-Lite Facades became the main place to order from. Using Pro-Steel Lintels along with Pro-Clad 1 for the internal balcony areas and Pro-Clad 2 soffit areas.

This project looks fantastic and our products were easy for site to install and most importantly, completed on time.

The finer details:

Total number of Bolt-Ups:

2,500 linear metres.

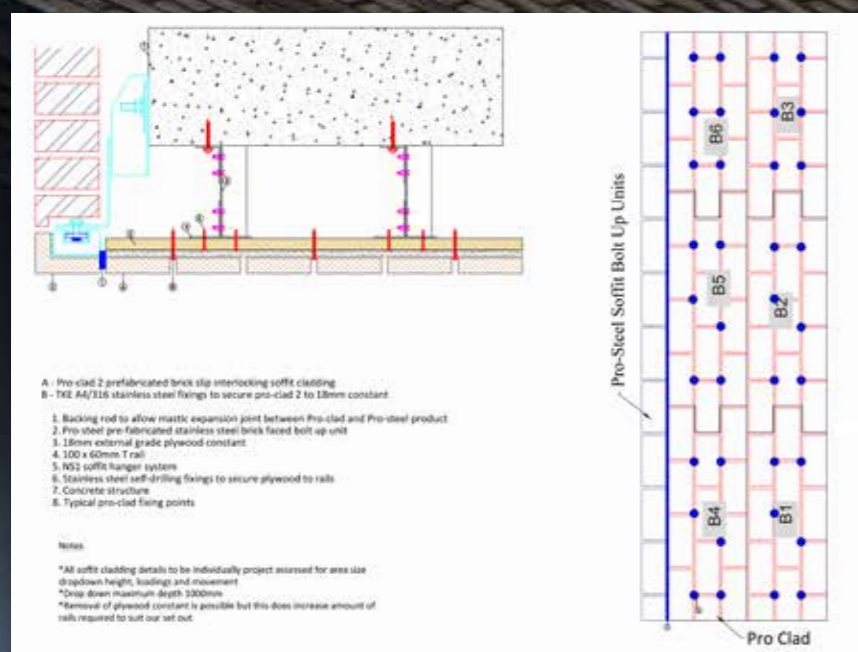
Was there any other products used:

Yes Pro-Clad 1 was used for the internal balcony areas and Pro-Clad 2 for the soffit areas.

Bricks used:

Over 100,000 special 50mm bricks were cut for this project.

UPPER RICHMOND ROAD



Lintels & Testing Information

Both the lintels and the brick slips have been independently tested by Notified and Technical Approval Bodies to evaluate and validate the load capacity, physical performance and long term durability of all components. The lintels have been designed in line with the requirements of BS EN 845-2 & BS 5977-1 and tested in line with BS EN 846-9.

The brick slips are tested using the guidance of ETAG 034 to evaluate the accelerated Freeze/Thaw weather resistance both saturated and dried of the slips bonded to backing structures of various materials including stainless steel and powder coated galvanised steel. The tests include the evaluation of bond strength and durability of the brick slips bonded to stainless steel where a service life of 60 years can be achieved.

The bond strength and impact resistance of the brick slips were tested before and after the accelerated cyclic weather tests to validate the integrity and durability of the system.

The tests included:

- ✔ Heat / Rain weathering to ETAG034 – Weathered samples only.
- ✔ Bond Strength testing using ETAG004 as guidance- Control and Weathered samples
- ✔ Impact testing to ISO 7892 - Control and Weathered samples



Pro-Steel Lintels.

Our lintels are lightweight brick faced prefabricated units that are manufactured off-site and supplied to the project with brick slips bonded to the surface. Working in a controlled and uncontaminated factory environment makes our lintels very appealing to contractors and architects. With our advanced adhesion technique we ensure that our product delivers unrivalled performance and eliminates the potential failures associated with other methods.

When used over door and window openings our lintels remove the need for masonry support and artisan bricklayers. Our lintels arrive to site in one piece and are produced from the same batch of bricks used on-site so a perfect match is achieved blending seamlessly with already constructed brickwork.

Our lintels are effortlessly positioned by semi-skilled construction operatives, removing the need for artisan bricklayers. Average installation times are reduced by 90%.

The brick slip soffit feature is bonded to the lintel carrier using a specially formulated resin adhesive in a stretcher/running bond to match seamlessly with the facing brickwork and reveals where relevant.

Look at the bigger picture when using pre-fabricated lintels, it's a fraction of the price of site based construction, where labour costs are significantly reduced with the added benefit of the lintels being 50% lighter than most traditional solutions.

Our capabilities are more than just standard Lintels we can also supply Flat Arch Lintels, Segmented Arch Lintels, Corbelled Gothic Arch Lintels & Various Panel Systems. To discuss your requirements please contact us.



Fab-Lite Facades Lintels

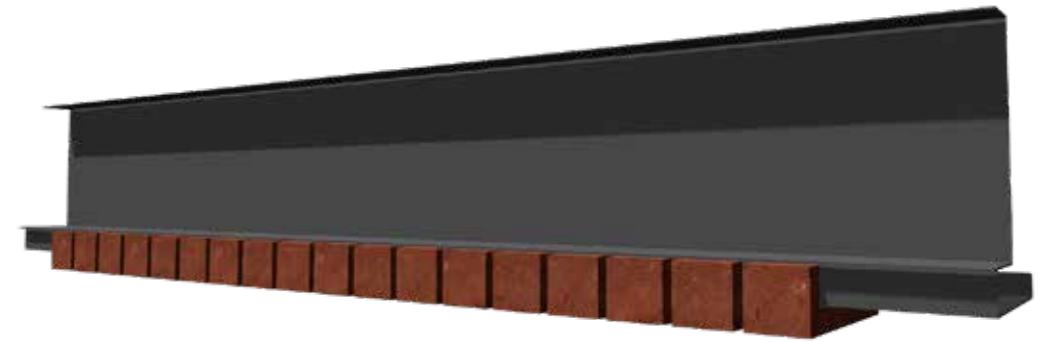
Our prefabricated lintels offer a quick and simple way of creating deep soffits above window and door openings. These lintels are ideal where speed is important - the permanently bonded brick slip facings.

Like our Bolt Up units the bricks are collected from site giving us the advantage of using the same batch and the main brickwork. Then cut into slip form and bonded. This gives a seamless blend meaning no compromise on quality or appearance.



Soldier Bond Lintel Unit

The Fab-Lite Facades Soldier Bond Lintel is designed to allow an opening to be created in a single leaf of masonry, typically the external leaf of a cavity with an integrated brick slip soffit feature. The brick slip soffit feature is bonded to the lintel carrier using a specially formulated resin adhesive in a soldier bond. Fab-Lite Facades Lintels can be used to create a feature at the window soffits or openings, differentiating between facing brickwork and reveals where relevant whilst concealing the backing steel.



Header Bond Lintel Unit

The Fab-Lite Facades Header Bond Lintel Range is designed to allow an opening to be created in a single leaf of masonry, typically the external leaf of a cavity with an integrated brick slip soffit feature. The brick slip soffit feature is bonded to the lintel carrier using a specially formulated resin adhesive in a header or rowlock bond. Fab-Lite Facades lintels can be used to create a feature at the window soffits or openings, differentiating between facing brickwork and reveals where relevant whilst concealing the backing steel.

NEW FOR 2020 Brick Lintel Mechanical Fix



Every brick slip on this Pro-Steel Lintel system is mechanically fixed and resin bonded for ultimate security. This Pro-Lock system uses A2 fire resistant Epoxy resin.



Stretcher Bond Lintel Unit

The Fab-Lite Facades Stretcher Bond Lintel Range is designed to allow an opening to be created in a single leaf of masonry, typically the external leaf of a cavity with an integrated brick slip soffit feature. The brick slip soffit feature is bonded to the lintel carrier using a specially formulated resin adhesive in a header or rowlock bond. Fab-Lite Facades lintels can be used to create continuity of brickwork on soffits or openings, seamlessly blending with facing brickwork and reveals where relevant whilst concealing the backing steel.



SHREWSBURY SCHOOL

The large arches at high level were complex brick cutting and fabrication with a 12 course high and 3 brick deep soffits. However, the best was yet to come with the Architect wanting to create a Segmental arch across the front entrance to the building that spanned more than 12 meters and again required a deep soffit return.

The design team on the project included the Main Contractor, Structural Engineer, Architect and Brick supplier to ensure we were able to meet all their requirements can fabricating a stainless steel lintel in three pieces that enabled the brick arch to be transported to site before being assembled under our supervision and then rotated into position.

The finish was well worth all the hours of discussion on how best to achieve it and is one arch we are rightly proud to have been involved in creating!

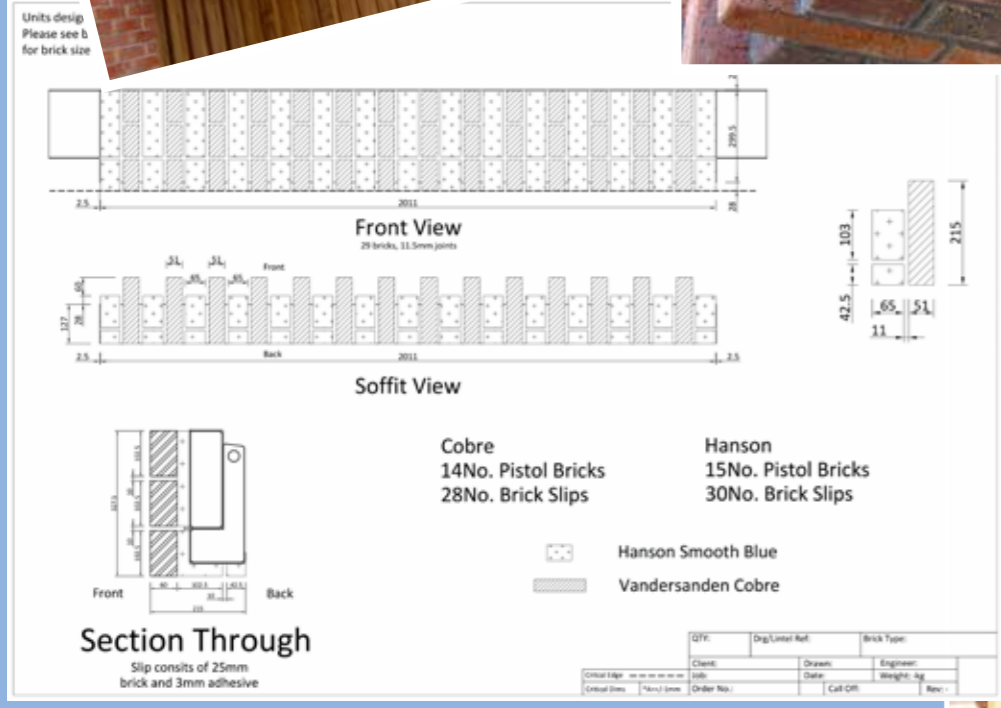


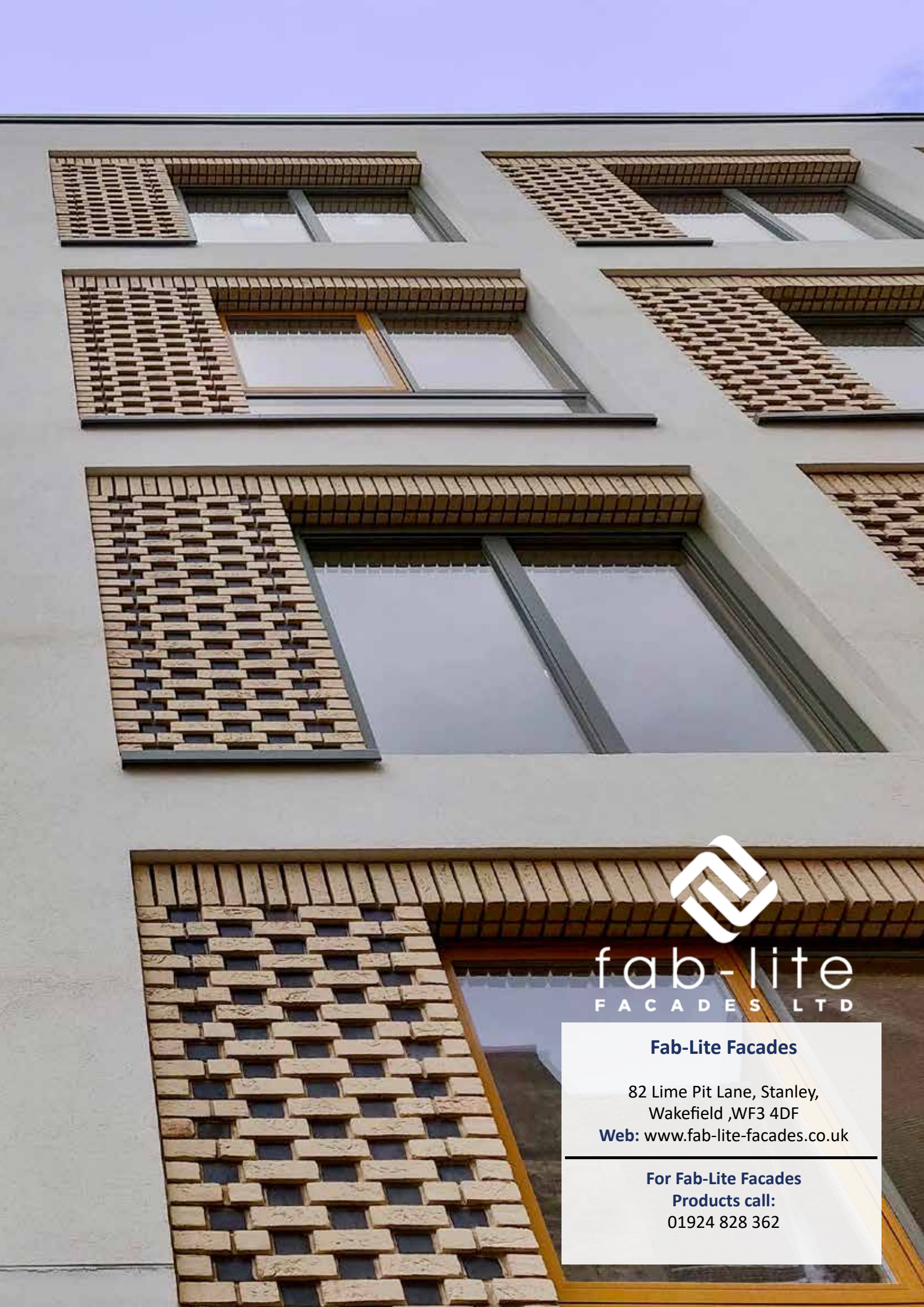
Pegasus Life at Litchfield

At our first meeting with the project Architects Proctor and Mathews they said this would be a real challenge to our capabilities as they had some highly unusual requirements for vertical corbel details to be incorporated within our lintel designs.

Despite the challenge, this project was successfully detailed up and the finish to the complex areas is totally seamless with the choice of contrasting bricks on adjacent courses adding to the effect.

A project that we are extremely proud to have been involved in creating.





fab-lite
F A C A D E S L T D

Fab-Lite Facades

82 Lime Pit Lane, Stanley,
Wakefield ,WF3 4DF

Web: www.fab-lite-facades.co.uk

For Fab-Lite Facades

Products call:

01924 828 362